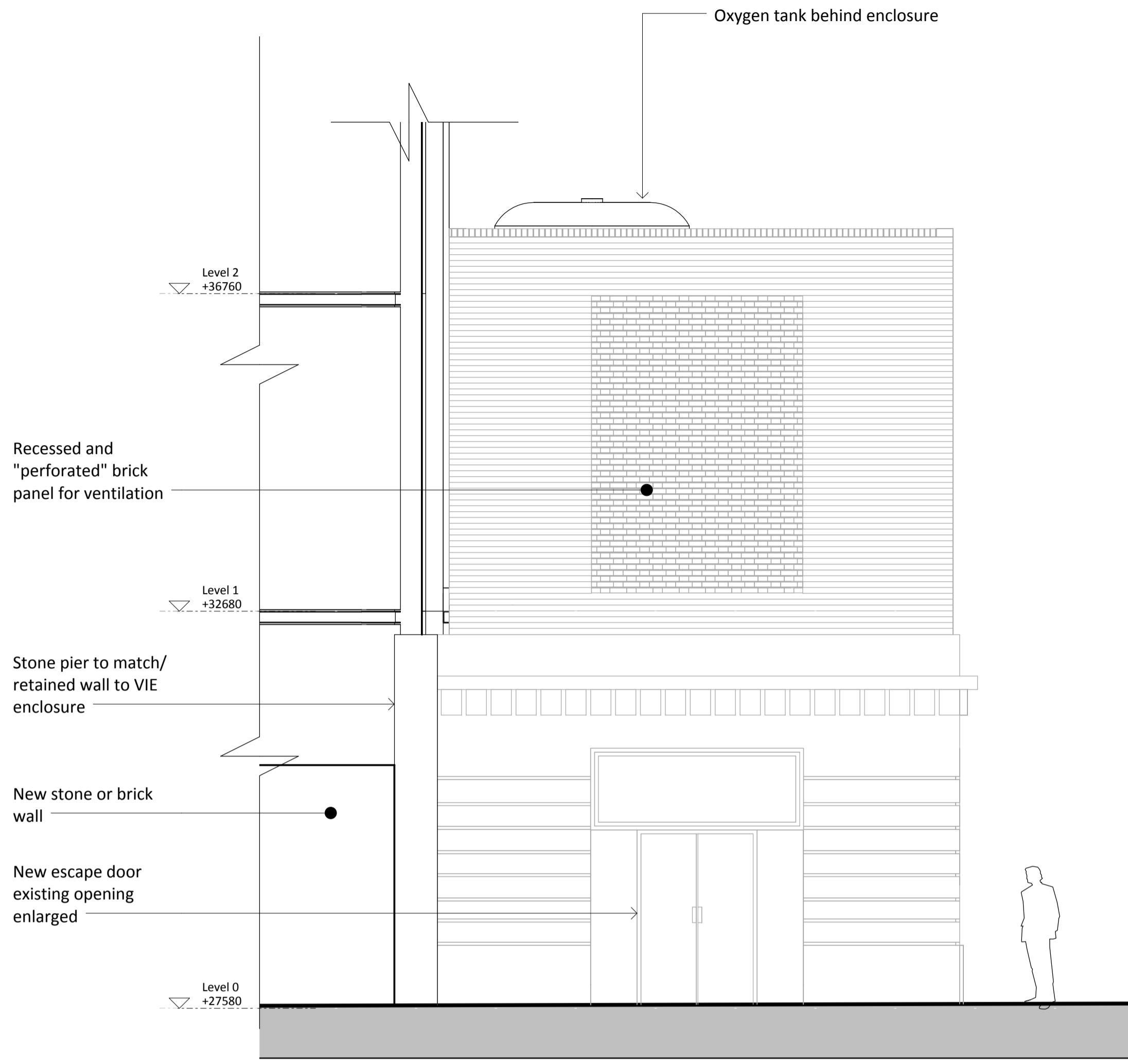


- Brick coping / stone (to be agreed).
- One brick thick solid Flemish Bond wall with lime mortar.
- Flemish Bond perforated recessed brick panelling with headers removed. Set in lime mortar to avoid expansion of joints
- Header omitted

1-Detail of VIE Enclosure Corner



2-VIE Elevation East

1 : 50



3-VIE Perspective View

GENERAL DESCRIPTION

A) Pre-cast concrete (reconstituted stone) elements (PCC)
 Similar in hue (colour) and tone (lightness) to the Portland Stone used in buildings nearby, a light grey, with mica fines or similar added to create a surface sparkle. Formed in specially fabricated steel moulds and carefully acid etched to remove surface latence and expose the aggregate.

B) Aluminium (AL) elements
 All are polyester powder coated (PPC) to a metallic colour (RAL 9006, white aluminium, or RAL 9007, grey aluminium) unless otherwise stated as Anodised (AD) in which case it will be to a metallic colour range similar to the RAL colours stated for PPC elements.

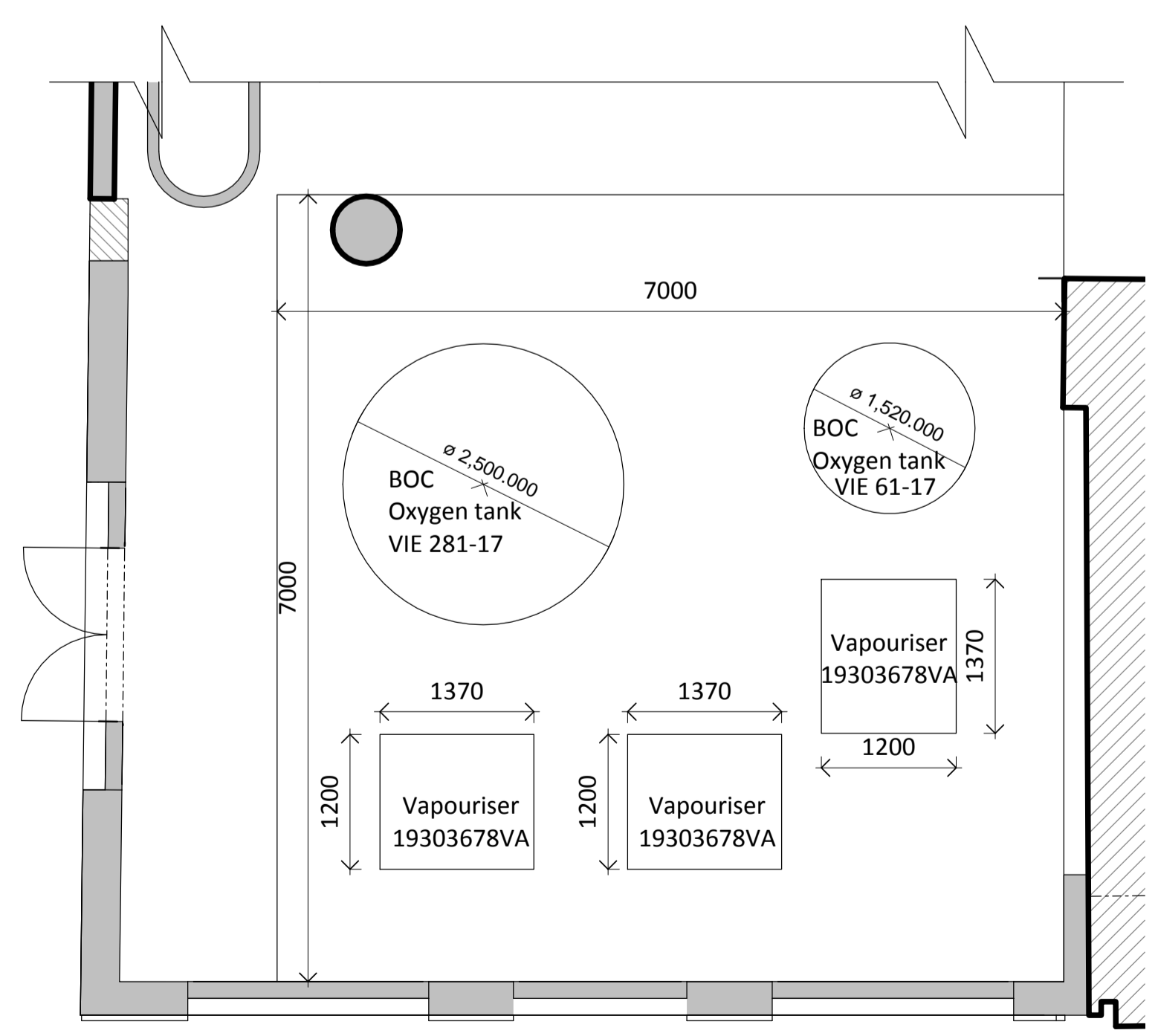
C) Mild Steel (MS) elements
 All finished in PPC as aluminium (AL) elements.

D) Stainless Steel (SS) elements
 All brushed stainless steel, exterior quality stainless steel (316/1.4401).

E) Workmanship and fixings for metal elements

1. All sections specially fabricated or extruded
2. All welds ground flush and smooth, where elements are defined as anodised then no welding is to be carried out.
3. Corner elements for aluminium extrusions fabricated by casting and machine finishing, no mitred corners are provided.
4. All fixings recessed flush with counter sunk hex heads, colour to match element in which the fixing sits.

1
1558



4-VIE Plan Level 0

1 : 50

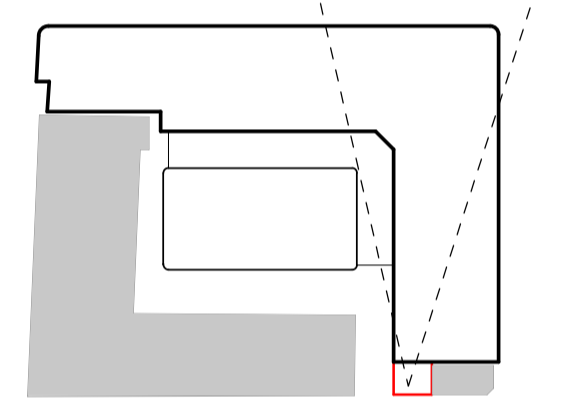
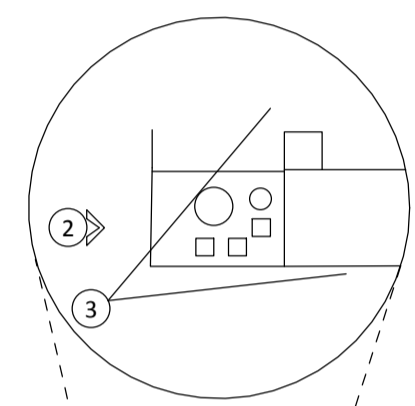


GENERAL NOTES

- G1 Any discrepancies between drawings to be report to the Architect immediately.
- G2 All Levels are above Ordnance Datum (AOD)
 - G2.1 New Levels are shown thus: +12.345
 - G2.2 Existing Levels are shown thus: +12.345
 - G2.3 Retained Existing Levels are shown thus: EX +12.345
- G3 Use figured dimensions only. Scale using scale bar below.
- G4 Refer to Engineers drawings for all structural and services information.
- G5 Clear height (finished floor to finished soffit) is shown thus: 2750
- G6 Setting Out points shown thus: SOP
- G7 Finishes are shown thus: [Finish symbols]
- G8 Room numbers are shown thus: CX-100-001
- G9 Door (D) & Window (W) references are shown thus: [Door/Window symbols]
- G10 For tolerances see the Design Drawings and Specifications
- G11 Refer to XXX for T-Sheet references, and to XXX for Architectural Specifications. T-sheet References are shown thus: IWS-01

NOTES

Also refer to A/UCLH4/1555 (Latest revision)
 VIE Vessel + Vapouriser sizes are based on BOC email dated 12 September 2012 + DWG ref. PN0059



For Information

Date	Rev	Status
22.10.13	A	Issue 251_ For Planning
04.12.13	B	Issue 266_ For Comment
04.12.13	C	Issue 269_ For BOC confirmation
04.12.13	C	Issue 273_ For LBC comment
06.12.13	D	Issue 270_ For Planning
13.12.13	E	Issue 270_ Issued for Planning
13.12.13	F	Issue 270_ Issued for Planning
03.03.14	G	Issue 380_ Revised Planning

Scott Tallon Walker Architects
 10 Cromwell Place, London SW7 2JN United Kingdom
 Tel: +4 (0)20 7589 4949
 Email: mail@stwarchitects.com
 www: www.stwarchitects.com

EDWARD WILLIAMS ARCHITECTS
 116 Princesdale Road, London, W11 4NH
 email: mail@edwardwilliamsarchitects.com
 www: edwardwilliamsarchitects.com

Client: **University College London Hospitals**

Project: **UCLH Phase 4 & PBT**

Drawing Subject: **VIE - East Elevation & Perspective View**

File Reference:
 Scale: **1 : 50 at A1** Date: **07 January 2014**

Drawn By: [] Checked By: []

Drawing Status: **For Information**

Project Status:

	Sort Code	Drawing No.	Rev
STW Ref	12046-EWA-A2	1558	G
EWA Ref	A/UCLH4	1558	G